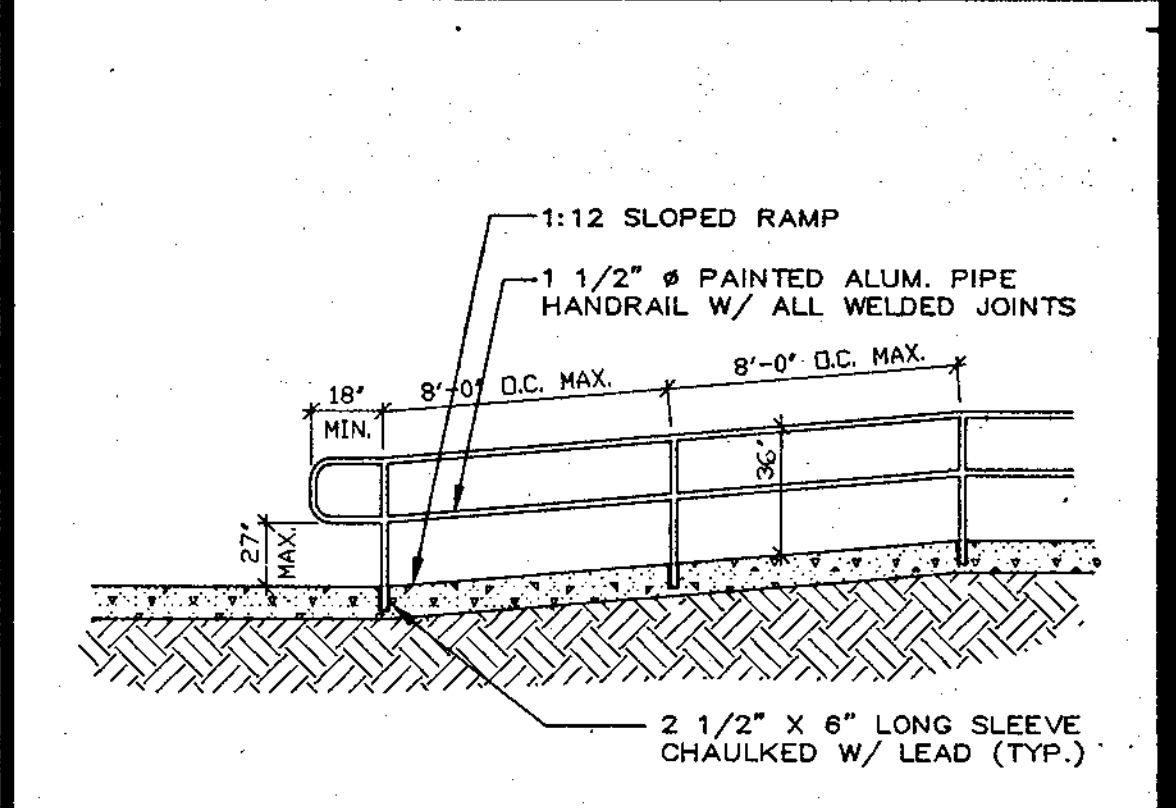
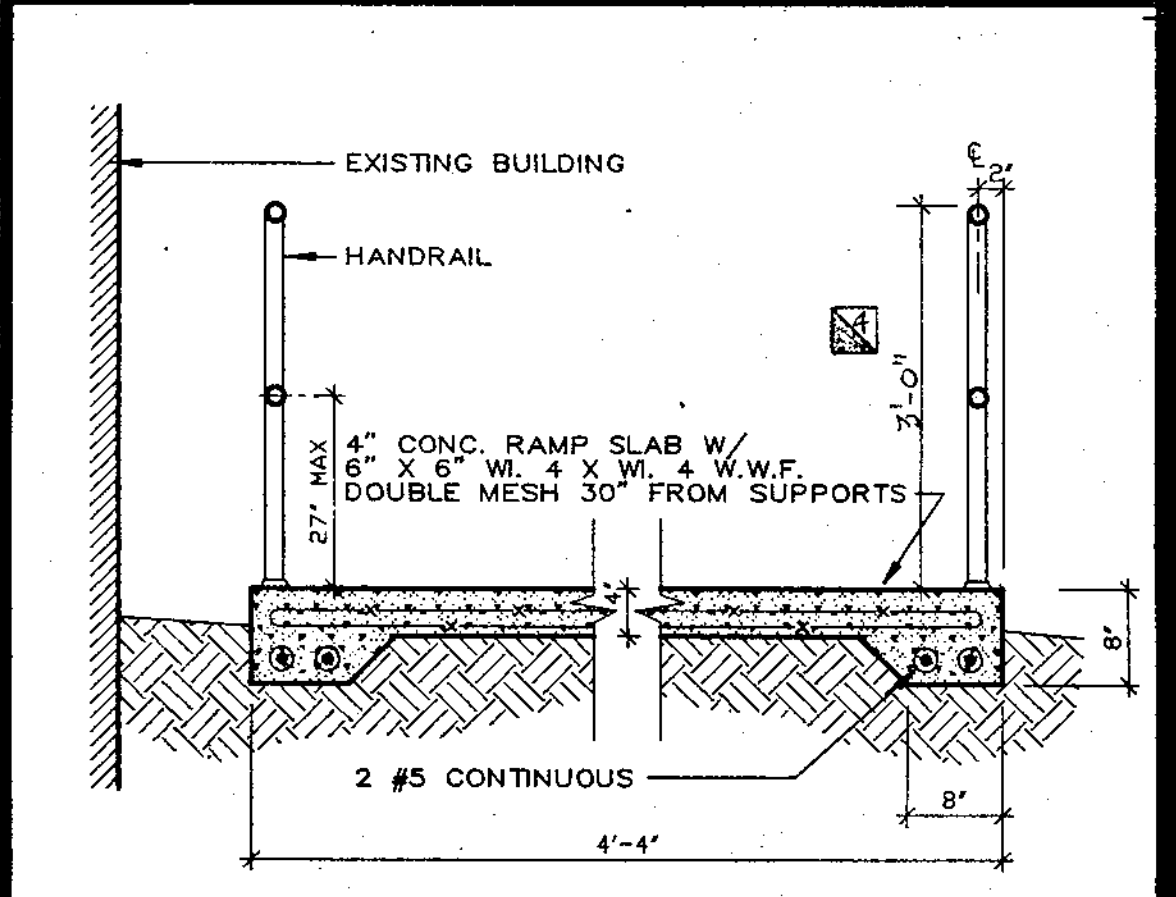


LEGAL DESCRIPTION:
A PARCEL OF LAND LYING IN SECTION 14, TOWNSHIP 45 SOUTH, RANGE 24 EAST, LEE COUNTY, FLORIDA.

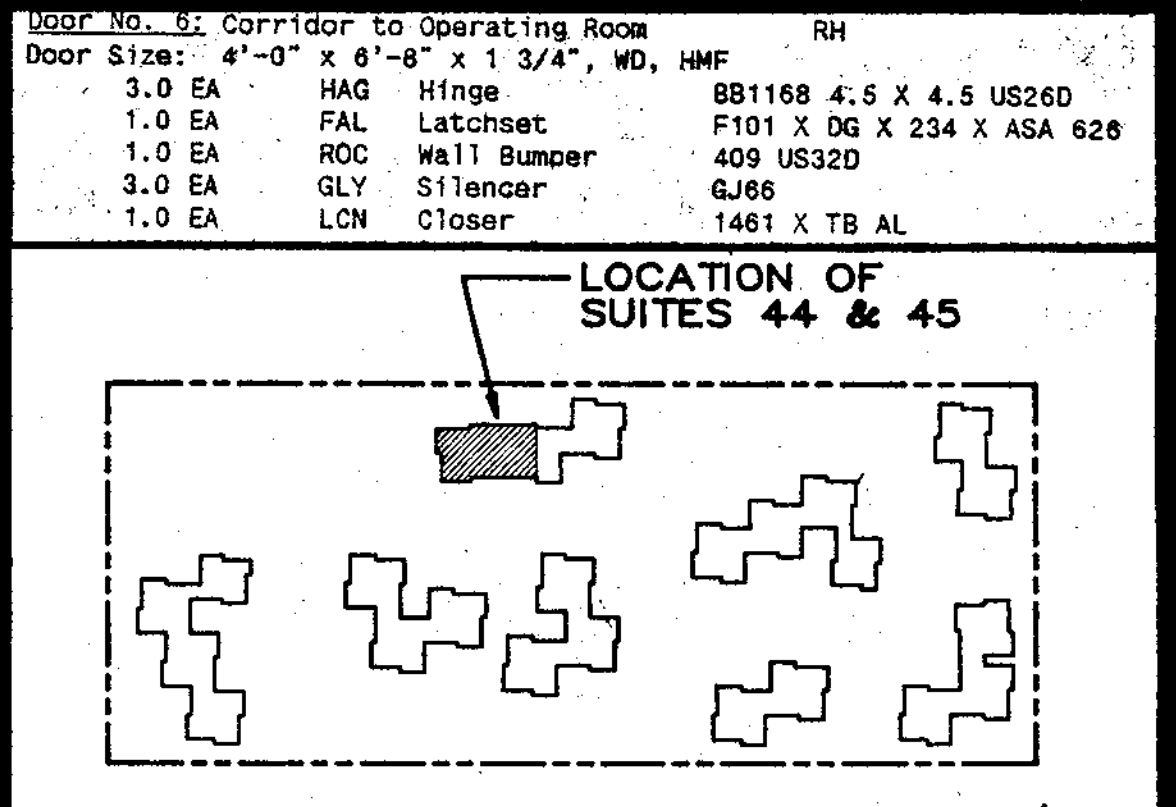
CONSTRUCTION TYPE:
TYPE VI UNPROTECTED (UNSPRINKLERED) PER S.B.C. (1991) TYPE V (2000) PER N.F.P.A.-220 (1991 ED.)
OCCUPANCY TYPE: BUSINESS



ELEVATION / DETAIL
1/4" = 1'-0"



HANDRAIL SECTION
3/4" = 1'-0"



KEY PLAN KENWOOD PARK
N.T.S.

APPLICABLE CODES:
STANDARD BUILDING CODE (1991), N.F.P.A.-220 (1991)
H.F.P.A.-101 (1991), CHAPTER 100-30 F.A.C., CHAPTER 395.07 F.S.

FLOOR PLAN SUITES: 44 & 45
1/4" = 1'-0" NOTES: DOORS WITHOUT MARKS ARE EXISTING.
GENERAL CONTRACTOR TO PROVIDE 1/2" PLYWOOD WALKWAYS (4'-0" WIDE) IN ATTIC SPACE TO EACH OF THE NEW AIR HANDLING UNITS.
N.U.S.F. 1521 S.F. (RENOVATED AREA)

STRUCTURAL NOTES:

- STRUCTURAL STEEL: ALL STRUCTURAL STEEL EXCEPT STRUCTURAL PIPE COLUMNS OR TUBES TO BE ASTM-36 DESIGNATION AND TO BE FABRICATED AND ERRECTED IN ACCORDANCE WITH AISC SPECIFICATIONS. STRUCTURAL TUBING TO BE ASTM-500 OR EQUAL. ALL CONNECTIONS OF STEEL TO BE WELDED UNLESS OTHERWISE SHOWN. ALL STRUCTURAL STEEL TO HAVE ONE SHOP COAT OF RUST INHIBITIVE PAINT. PROVIDE 3/8" THK. STIFFENERS AT CENTER OF BEARING FOR ALL BEAMS.
- TOUCH UP PAINT: ON ALL PAINTED SURFACES DAMAGED OR DISCOLORED BY WELDING, ERRECTING OR BOLTING, CLEAN AREAS OF SHOP PAINT AND APPLY SAME MATERIAL USED FOR SHOP PAINTING TO A MINIMUM DRY THICKNESS OF 2 MILS.
- WELDING: ALL WELDING SHALL BE PERFORMED BY CERTIFIED WELDERS AND CONFORM TO SECTION 4 OF THE A.W.S. WELDS SHALL HAVE ONE COAT OF RUST INHIBITIVE PAINT. ALL WELDS SHALL BE INSPECTED AND CERTIFIED BY THE ERECTOR. CERTIFICATION SHALL BE SUBMITTED TO THE ENGINEER.

HARDWARE SCHEDULE

Hardware Schedule based on the following manufacturers:
Hager - Hinge
Falcon - Locksets, Latchsets
LCN - Closer
Rockwood - Wall Bumpers
Pemko - Thresholds
Von Duprin - Exit Devices
Glynn Johnson - Silencers

Door No. 1:	Exterior from Corridor	RHR
Door Size:	3'-0" x 6'-8" x 1 3/4", WD, HMF	
3.0 EA	HAG HINGE	BB1279 4.5 X 4.5 NRP US26D
1.0 EA	VON EXIT DEVICE	22L SP28
1.0 EA	LCN CLOSER	1461 X TB AL
1.0 EA	PARALLEL ARM	
3.0 EA	PEM THRESHOLD	2005AV 36"
3.0 EA	GLY SILENCER	GJ66
Door No. 2:	* Restroom to Waiting (2)	RHR, LH
	Corridor to Waiting	LH
	Corridor to Insurance Office	RH
	Corridor to Dictating	LH
	Corridor to Doctor's Office	LH
	Corridor to Changing	LH
	Changing to Doctor's Office	RHR
	Corridor to Soil Workroom	RH
Door Size:	3'-0" x 6'-8" x 1 3/4", WD, HMF	
3.0 EA	HAG HINGE	BB1279 4.5 X 4.5 NRP US26D
3.0 EA	VON EXIT DEVICE	22L SP28
1.0 EA	LCN CLOSER	1461 X TB AL
1.0 EA	PARALLEL ARM	
3.0 EA	PEM THRESHOLD	2005AV 36"
3.0 EA	GLY SILENCER	GJ66
Door No. 3:	Corridor to Janitor's Closet (2)	LH & RHR
Door Size:	2'-10" x 6'-8" x 1 3/4", WD, HMF, "C" LABEL, 45 MIN.	
6.0 EA	HAG HINGE	BB1279 4.5 X 4.5 US26D
2.0 EA	FAL LOCKSET	F581 X DG X 234 X ASA 626
2.0 EA	LCN CLOSER	1461 X TB AL
1.0 EA	PARALLEL ARM	
1.0 EA	ROC WALL BUMPER	409 US32D
6.0 EA	GLY SILENCER	GJ66
Door No. 4:	Corridor to Exit Corridor	LHR
Door Size:	3'-0" x 6'-8" x 1 3/4", WD, HMF, "C" LABEL, 45 MIN.	
3.0 EA	HAG HINGE	BB1279 4.5 X 4.5 US26D
1.0 EA	VON EXIT DEVICE	22L SP28
1.0 EA	LCN CLOSER	1461 X TB AL
1.0 EA	PARALLEL ARM	
1.0 EA	ROC WALL BUMPER	409 US32D
3.0 EA	GLY SILENCER	GJ 66
Door No. 5:	Exterior from Corridor	LHR
Door Size:	3'-0" x 6'-8" x 1 3/4", MD, MF	
3.0 EA	HAG HINGE	BB1279 4.5 X 4.5 NRP US26D
1.0 EA	VON EXIT DEVICE	22L SP28
1.0 EA	LCN CLOSER	1461 X TB AL
1.0 EA	PARALLEL ARM	
1.0 EA	PEM THRESHOLD	2005AV 36"
3.0 EA	GLY SILENCER	GJ66

CONTRACTOR TO VERIFY DOOR HANDING.

Door No. 6:	Corridor to Operating Room	RH
Door Size:	4'-0" x 6'-8" x 1 3/4", WD, HMF	
3.0 EA	HAG HINGE	BB1168 4.5 X 4.5 US26D
1.0 EA	FAL Latchset	F101 X DG X 234 X ASA 626
1.0 EA	ROC Wall Bumper	409 US32D
3.0 EA	GLY Silencer	GJ66
1.0 EA	LCN Closer	1461 X TB AL

ARCHITECT
JEFF FALKANGER & ASSOCIATES INCORPORATED

614 SOUTH FEDERAL HWY. FT. LAUDERDALE, FL 33301 (305) 764-6575

2000 MAIN ST., SUITE #801 FT. MYERS, FL 33901 (813) 332-1554

DESIGNED K.L.
DRAWN J.S.
CHECKED K.L.

- REVISIONS**
- GENERAL REVISIONS 2-16-93
 - PERMIT REVISIONS 4-13-93
 - A.H.C.A. REVISIONS 4-15-93
 - A.H.C.A. REVISIONS 5-1-93
 - GENERAL REVISIONS 5-18-93
 - A.H.C.A. REVISIONS 5-24-93

CONV 192025 DATE 2-5-93

NEW AMBULATORY SURGERY CENTER INTERIOR FOR DR. OSTENDORF

LEE COUNTY, FLORIDA
FLOOR PLAN HARDWARE SCHEDULE

CONSTRUCTION DOCUMENTS

A-1 OF 4

LAST DATE PRINTED 2-5-93 / 2-16-93 / 3-22-93 / 4-15-93 / 5-19-93 / 5-20-93